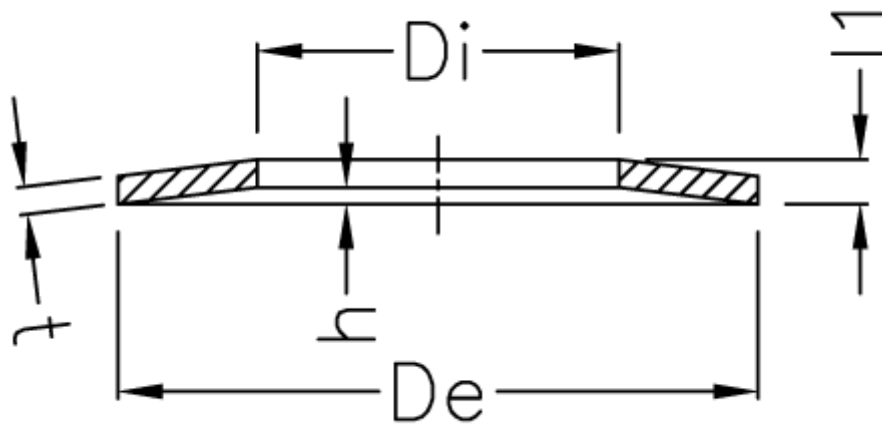


Article number: 060205612

Description: Mubea Disc spring (ball bearing), non-slotted
46,5x30,5x0,6

Measures



De	= 46.5	For ball bearing	= 6303	Spring Power $F v/0.25h$ N	= 93.7
De	= 47	h0	= 0.90	Spring Power $F v/0.50h$ N	= 139.5
Di	= 30.5	h0/t	= 1.500	Spring Power $F v/0.75h$ N	= 153.4
Di	= 17	l1	= 1.50	Spring Power $F v/1.00 h$ N	= 151.3
Di	= 20	Spring deflection $s=0.25h$ mm	= 0.225	t	= 0.60
Di	= 25	Spring deflection $s=0.50h$ mm	= 0.450	Weight kg/1000	= 4.557
For ball bearing	= 6204	Spring deflection $s=0.75h$ mm	= 0.675		
For ball bearing	= 6005	Spring deflection $s=1.00h$ mm	= 0.90		